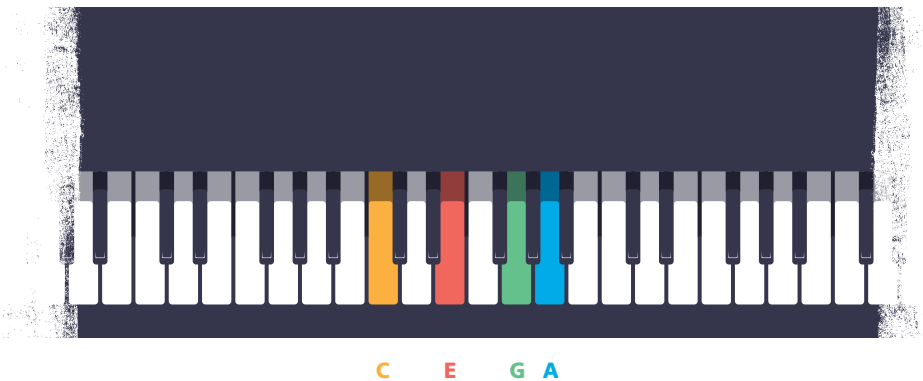
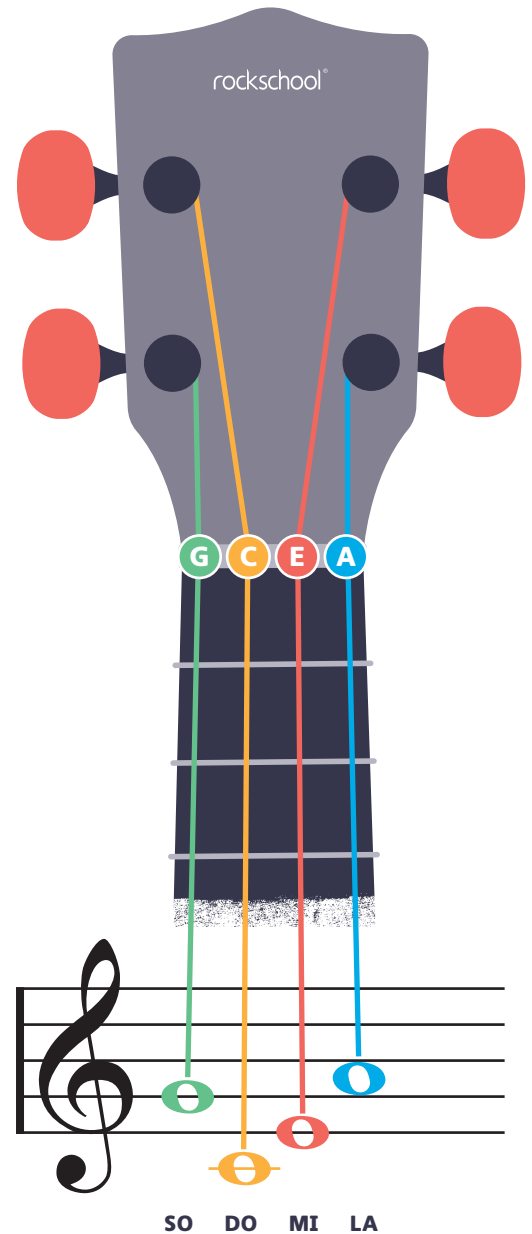


How To Tune Your Ukulele

The easiest way to tune a ukulele is to buy an electronic tuner, or even to download a free tuning app. It is nice to understand how your instrument works though, and ukulele tuning is particularly interesting.

The strings on most instruments start low and get progressively higher if you play them in order but the ukulele starts with a high note before dropping low! **This is called re-entrant tuning.**



We can also give numbers to the strings, like this:

A = 1st **E = 2nd** **C = 3rd** **G = 4th**

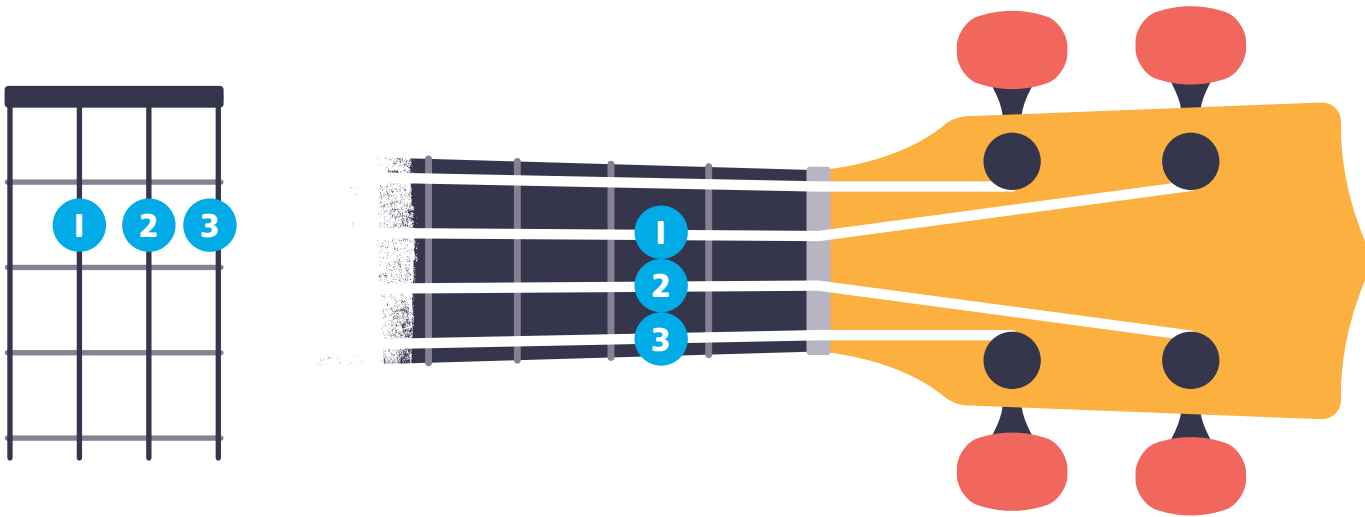
Did you

know?

Some **banjos** also have re-entrant tuning. Can you find out if there are any other instruments that use this tuning?

Chord Boxes

We can draw chords with a diagram of the end of the ukulele neck showing the strings and frets. **Sometimes this shows finger numbers, too.**



One Finger Per Fret

As you play through the lessons and pieces in this book you should use what's called the one-finger-per-fret method. This means using your first finger to play the 1st fret, your second to play the 2nd and so on, as shown in the illustration opposite. Notice how each finger is placed close to but not on top of each fret. This method means you can keep your hand more or less in one position and not have to move it around every time you need to play a different note.

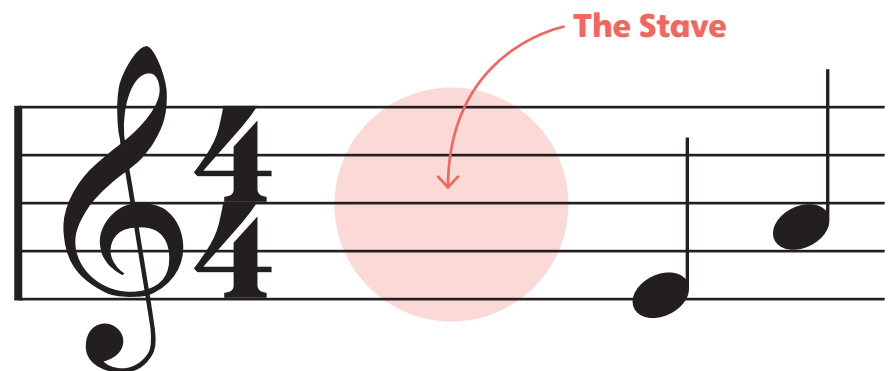


How To Read Music

You'll be reading music in no time with
The Rockscool Ukulele Method!

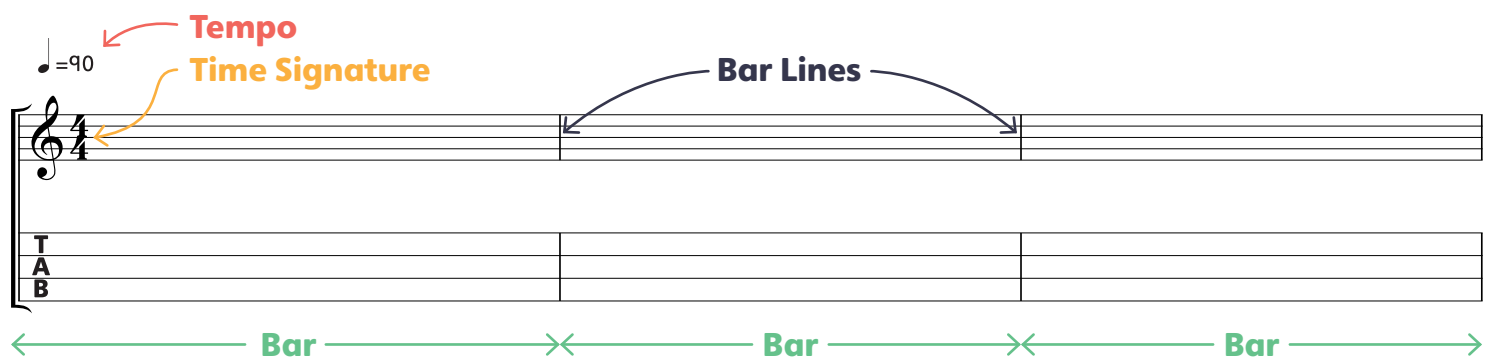
The Staff

The staff tells you what notes to play, when to play them and how long to play them for. The staff consists of **five** lines. Notes can be placed on any of these lines or any space between the lines.



Tempo, Bar Lines and Time Signatures

Music is divided into groups of beats called **bars**. Vertical lines on the staff are called **bar lines**. They show where each bar begins and ends. The **tempo** of a piece tells us how fast or slow it is. The **time signature** tells us how many beats there are in every bar, and what kind of beat it is.



TAB

TAB is the most popular type of notation for ukulele players because you don't have to learn to read music before you start using it. TAB shows you what notes to play by placing numbers on top of four lines that represent the strings of the ukulele. The numbers tell you where to place your fingers on each string. But TAB **doesn't show you when to play the notes nor how long each note should last**. All of this information can be found on the musical staff...

Let's Play!


Ok, you are making a great sound and you know some cool rhythms so it's time to get creative!

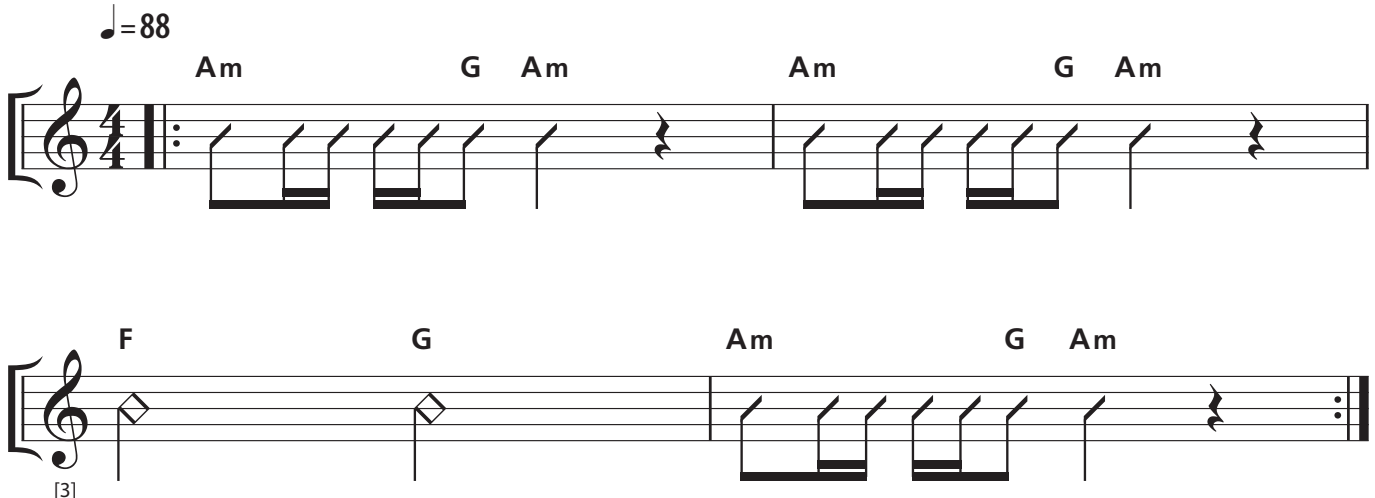
MISSION 1

Listen to the audio download, or ask your teacher to play this funky chord progression:

'Twenty Twenty'

♩ = 88

Teacher 



Am G Am Am G Am

F G Am G Am

[3]

MISSION 2

Tap a rhythm along to the music. **Anything you like!**

MISSION 3

Now play your **C string** along to the music. Play any rhythms you like, play **fast**, play **slow**, play **loud**, play **soft**. **Mix it up** – this is your musical adventure!

Did you know?

This is called **improvising**. When you improvise you are inventing and playing music at the same time!



Download your audio
See page 4 for details

Stick your achievement sticker here!