

# Imagine | John Lennon



Album: *Imagine*  
Released: 1971  
Label: Apple

Genre: Peace Anthem  
Written by: John Lennon  
Produced by: John Lennon, Yoko Ono and Phil Spector

## Background Info



Written by John Lennon in 1971, 'Imagine' was a worldwide hit which conveyed themes of politics, religion and love. Lennon wrote the song at his home in Berkshire and was heavily influenced by the poetic works of his wife Yoko Ono, specifically her book *Grapefruit*. 'Imagine' was released in the US in late 1971 and peaked at number 3 on the Billboard Hot 100 chart. Although the single wasn't officially released in the UK at the time, the LP on which it featured (of the same name) reached the top of the UK album charts in November of that year.

Whether as a member of the Beatles or as a solo artist, John Lennon's influence both as an artist and peace activist was profound. His song 'Imagine' was inducted into the Rock and Roll Hall of Fame's *500 Songs that Shaped Rock and Roll*, and the track earned him a Grammy Hall of Fame Award.

## Performance Notes



In this classic peace anthem ballad from the early '70s, we hear John Lennon managing his falsetto comfortably with a soft yet clear tone quality, making the song a good challenge at this entry level.

With this abridged arrangement you will be singing the first verse and pre-chorus to then move directly to the last chorus. The melody spans a little over an octave (E3-G4, written an octave higher on the score for legibility), and you should choose a key where you can reach the highest notes securely, with clarity and some projection.

Take time to study the rhythmic and melodic phrasing so you are secure on both intonation and timing when singing to the backing track. It is important to emphasise the lyrics via clear articulation, as this will help your overall phrasing and communication of the lyrical content.

*'Key Features to Implement at this Grade'* are shown in the *Repertoire Overview* on page 6

## Audio Access

Audio for this book can be accessed via the **QR code** on the right (*requires a compatible smartphone or tablet*) or by using the **URL and download code** shown on page 5.



# Imagine

Words and Music by John Lennon

John Lennon

$\text{♩} = 72$  Peace Anthem

Piano

*mf*

With pedal

Note: Vocal sounds one octave lower than notated throughout

C F

3

C Cmaj<sup>7</sup> F

I - mag - ine there's no heav - en.\_\_\_\_

*mf*

5

C Cmaj<sup>7</sup> F

It's eas - y if you\_\_\_\_ try.\_\_\_\_

7

# Technical Exercises

## Group A: Scale

In this group, you will be asked to perform the first five notes of a major scale, ascending and descending. The example below is shown from the starting note of A3, however, you may perform it *from a starting note of your choice*. Please note: the examiner can play starting notes in the range A3–G#4, but you may sing *in any octave*.

This test is performed to a compulsory metronome click. The examiner will ask you which starting note you have chosen. You will hear the starting note followed by a one-bar (four click) count-in. You may perform this test using any vocal sound except humming or whistling. The tempo is ♩=80.

Major scale



## Group B: Arpeggio

In this group, the arpeggio needs to be prepared as shown below. The example is shown on the starting note of A3, but you may perform it *from a starting note of your choice*. Please note: the examiner can play starting notes in the range A3–G#4, but you may sing *in any octave*.

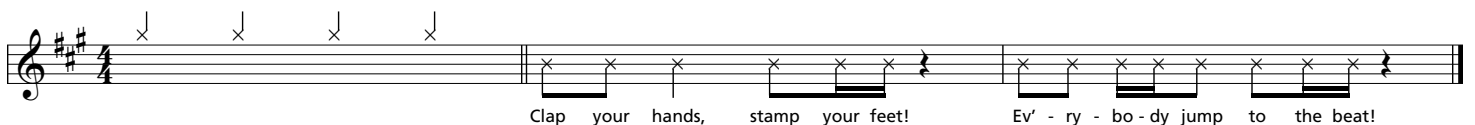
This test is performed to a compulsory metronome click. The examiner will ask you which starting note you have chosen. You will hear the starting note followed by a one-bar (four click) count-in. You may perform this test using any vocal sound except humming or whistling. The tempo is ♩=80.

Major arpeggio



## Group C: Rhythmic Study

In this group you will need to perform the rhythmic study shown below. The examiner will play the backing track (as found in the downloadable audio) and you will need to perform the test after the four-beat count-in. The tempo is ♩=80.



# Sight Reading

---

In this section you have a choice between:

- *Either* – a Sight Reading test
- *Or* – an Improvisation & Interpretation test (see facing page).

The examiner will ask you which one you wish to choose before commencing. Once you have decided, you cannot change your mind.

The examiner will give you a four-bar rhythm on the note C4. You will be given 90 seconds to practise, after which you will perform the test. You may sing in any octave. The tempo is ♩=70.

During the practice time you will be given the choice of a metronome click throughout or a count-in of four beats at the beginning. Whichever option you choose, the practice time will start with the examiner playing the root note. You will receive the same choice when performing the test. The test will start with the root note.

You may perform this test using any vocal sound except humming or whistling.



*Please note: the test shown is an example. The examiner will give you a different version in the exam.*