

All Is Found



Composer: Kristen Anderson-Lopez (1972)/ Robert Lopez (1975)
Nationality: American
Source/Date: *Frozen II: Original Motion Picture Soundtrack* (2019)

'All Is Found' was written by husband-and-wife duo Kristen Anderson-Lopez and Robert Lopez, for Disney's 2019 animated feature film release *Frozen 2*. The song was the first to be composed for the film, and is said to have been inspired by Norwegian lullabies. Featuring as the first track on the film's official soundtrack, 'All Is Found' was sung by Evan Rachel Wood and her performance was well-received by critics. The soundtrack has since been certified Gold in several countries across the globe and topped both the UK Compilation Albums and US Billboard 200 Albums Chart. The couple began their working partnership by composing for children's TV, before going on to score soundtracks for animated films including *Frozen*, *Frozen 2* and *Coco*. *Frozen 2* was the 58th animated feature film to be released by Disney, and saw Anderson-Lopez & Lopez receive an Academy Award nomination for Best Original Song with their composition 'Into the Unknown'.

Performance Notes



Moving your right arm freely from the elbow and having a very relaxed bow hold will help you to keep a smooth bow stroke throughout this piece. Aim for as sweet a sound as you can, keeping your bow parallel to your bridge. You should work on joining all bows together with a gluey turnaround at each end. This is often harder to achieve when you change string as you also need to remember to adjust the height of your right elbow. Try to keep your left-hand finger placement constant with a good round hand shape to always have good intonation.

Treat each crotchet rest as a breath between phrases, and remember that the other violin part has two quavers in that rest – this will help you with counting the beats. Your part is an accompaniment, so always listen out for the melody to make sure your timing is precise. Use full bows on the semibreves in bars 9 and 17, and at bar 17 make sure you 'fade out' and take your bow off the string gently at the end to avoid an abrupt finish.

Audio Access

Audio for this book can be accessed via the **QR code** on the right (*requires a compatible smartphone or tablet*) or by using the **URL and download code** shown on page 5.



All Is Found

from *Frozen 2*

By Kristen Anderson-Lopez and Robert Lopez

Soundtrack ♩ = 76

2

mp

5

10

mf

14

Technical Exercises

There are two groups of technical exercises at Debut:

- Group A: Scales
- Group B: Technical Studies

For group A, the examiner will request a selection from each group to be performed. For group B, you may choose **one** technical study to perform from the three listed in the grade book.

Group A: Scales

All scales must be played:

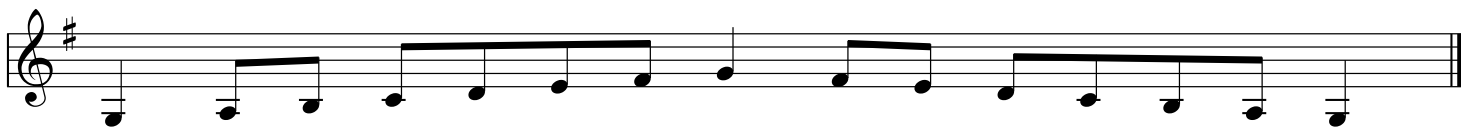
- Unaccompanied (recommended minimum tempo: ♩=50)
- Ascending and descending across the number of octaves as shown for each example

Major scales:

- Must be played with separate bows.
- Can be played with 'even notes' (quavers) **or** 'long tonic' rhythms. Scales are shown with 'long tonic' for illustrative purposes only (*candidate choice - see page 6 for further information*).

Major Scales

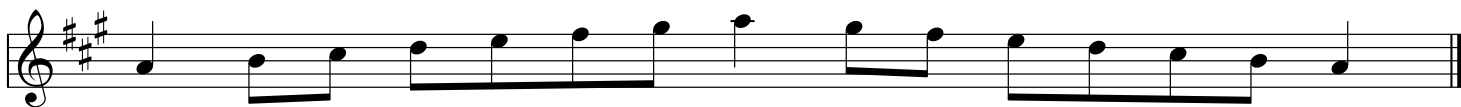
G major, one octave



D major, one octave



A major, one octave

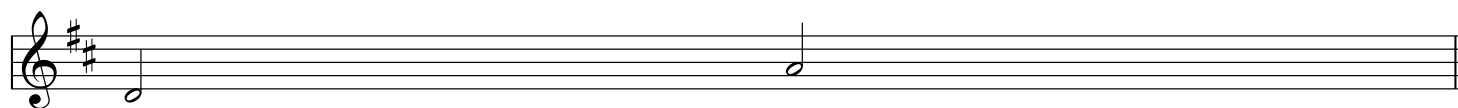


Ear Tests

The examiner will play two minims one after the other. Candidates are to state whether the second note is higher or lower in pitch than the first note. The test will be played twice, each time preceded by four clicks. For this exercise, candidates are to use the words 'higher' or 'lower'. The tempo is ♩=95.

The downloadable audio is representative of what candidates will hear in an exam.

Melodic Recall | Example test



Please note: The tests shown are examples: The examiner will give you a different version in the exam.