

# Sight Reading Grade 2

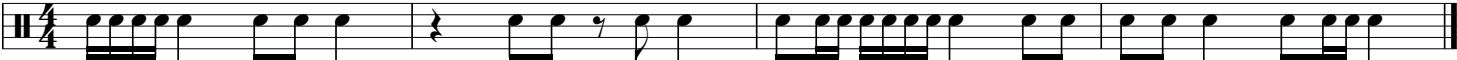
---

## Grade 2

The following examples are indicative of the types of test you will be given in the Grade 2 exam.

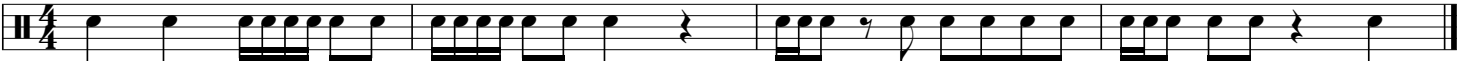
### Example 1

♩=80



### Example 2

♩=80



### Example 3

♩=80



# Improvisation & Interpretation Grade 4

## Grade 4

You will be asked to play a written two-bar groove, vary it in the following four bars and then improvise a two-bar solo. The test will be played to a backing track using the bass drum, hi-hat (closed and open), snare drum, ride cymbal and crash cymbal. You have 30 seconds to prepare then you will be allowed to practise during the first playing of the backing track, before playing it to the examiner on the second playing of the backing track. This test is continuous with a one-bar count-in at the beginning and after the practice session.

### Example 1



♩ = 100 *Funk*

1 2 3 4

Develop

Solo

[6]

### Example 2



♩ = 90 *Rock*

1 2 3 4

Develop

Solo

[6]

### Example 3



♩ = 100 *Funk*

1 2 3 4

Develop

Solo

[6]

# Ear Tests Grade 6

## Grade 6 Test 1: Fill Playback and Recognition

The examiner will play you a one-bar fill in common time played on the snare drum. You will play back the fill on the snare drum. You will then identify the fill from three printed examples shown to you by the examiner. You will hear the test twice. Each time the test is played it is preceded by a one-bar count-in. There will be a short gap for you to practise. Next you will hear a *vocal* count-in and you will then play the fill to the click.

### Example 1



A ♩=70

B ♩=70

C ♩=70

### Example 2



A ♩=70

B ♩=70

C ♩=70

### Example 3



A ♩=70

B ♩=70

C ♩=70

# Quick Study Pieces Grade 7

## Grade 7 Example 5



♩ = 120 *Latin*

Develop