

Losing My Religion

REM

Words & Music by Peter Buck,
Michael Mills, Michael Stipe & William Berry

♩=120 *Pop*

The drum notation is written on a single staff with a treble clef and a 4/4 time signature. The tempo is marked as ♩=120 *Pop*. The notation uses 'x' for snare and bass drum hits, and vertical lines for hi-hat patterns. Section A is marked from measure 1 to 9, and Section B is marked from measure 10 to 15. Measure 10 includes a repeat sign. The pattern consists of eighth notes on the snare and bass drums, with a hi-hat pattern of eighth notes.

I Heard It Through The Grapevine

Marvin Gaye

Words & Music by Norman Whitfield & Barrett Strong

♩=117 *Motown*

Intro

Verse

Technical Exercises

In this section the examiner will ask you to play a selection of exercises drawn from each of the four groups shown below. In addition there is a Fill exercise which you will play using the designated backing track. You do not need to memorise the exercises (and can use the book in the exam) but the examiner will be looking for the speed of your response.

The stickings shown (L & R) are there as a guide for right handed drummers. Left handed drummers should reverse the sticking patterns. Before you start the section you will be asked whether you would like to play the exercises along with the click or hear a single bar of click before you commence the test. Groups A–D should be played at ♩ = 70.

Group A: Single and Double Strokes

Single and double strokes in eighth and 16th notes, alternate bars

R L R L R L R L R L R L R R L L R R L L R R L L R R L L

Group B: Paradiddles

Single paradiddle in 16th notes with accents

R L R R L R L L R L R R L R L L

Group C: Flams

Flams in quarter notes

L R R L L R R L

Group D: Triplets

Triplets in eighth notes with alternate stickings

R L R L R L R L R L R L R L L R L L R L L R L L R L L

Ear Tests

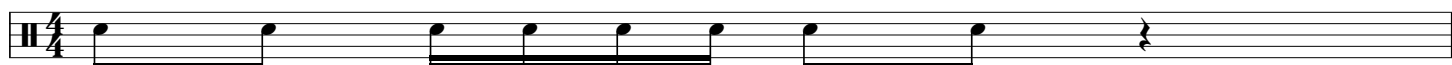
There are two Ear Tests in this grade. The examiner will play each test to you twice. You will find one example of each type of test printed below.

Test 1: Fill Playback and Recognition

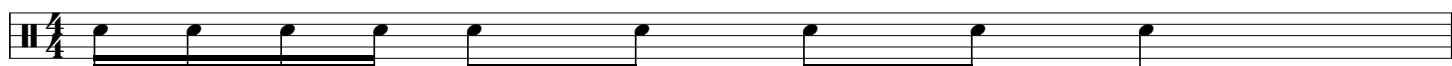
The examiner will play you a one bar fill in common time played on the snare drum. You will play back the fill on the snare drum. You will then identify the fill from two printed examples shown to you by the examiner. You will hear the test twice.

Each time the test is played it is preceded by a one bar count in. There will be a short gap for you to practise. Next you will hear the vocal count in and you will then play the fill to the click. The tempo is ♩ = 70.

A



B



Test 2: Groove Recall

The examiner will play you a two-bar groove played on the bass drum, hi-hat (open and closed) and snare. This is a two bar groove that is repeated. You will hear the test twice. You will be asked to play the groove back on the drum voices indicated for four bars.

Each time the test is played it is preceded by a one bar vocal count-in. The tempo is ♩ = 80.

♩ = 80

The notation consists of four identical two-bar phrases. Each phrase has a bass drum pattern (x) on the first and third beats, a snare drum pattern (o) on the second and fourth beats, and a hi-hat pattern (+) on the first and third beats. The tempo is marked as ♩ = 80.