

# Imagine

SONG TITLE: 'IMAGINE'

ALBUM: IMAGINE

RELEASED: 1971

LABEL: APPLE

GENRE: SOFT ROCK/POP

WRITTEN BY: JOHN LENNON/YOKO ONO

PRODUCED BY: JOHN LENNON/YOKO ONO/  
PHIL SPECTRE

UK CHART PEAK: 1

The image shows a snippet of musical notation for the song 'Imagine'. It is written in 4/4 time with a tempo of 76 beats per minute, categorized as Pop/Rock. The notation is presented on a grand staff with a treble clef on the upper staff and a bass clef on the lower staff. A box labeled 'A' is placed above the first measure. The key signature is C major, indicated by a 'C' above the treble staff. The melody in the treble staff begins with a quarter rest, followed by a quarter note G4, a quarter note A4, and a quarter note B4. The bass staff shows a C major triad (C4, E4, G4) with fingering numbers 1 and 5 above the notes. The tempo and genre are noted as '♩=76 Pop/Rock'.

Written by John Lennon in 1971, 'Imagine' was a worldwide hit which conveyed themes of politics, religion and love. Lennon wrote the song at his home in Berkshire and was heavily influenced by the poetry works of his wife Yoko Ono, specifically her book *Grapefruit*, so much so that she was later given a writing credit. His song speaks of a world where all humans are one, with no countries or religion to separate them. Lennon was often criticised by religious groups, claiming that the song was an atheist anthem. However, Lennon is quoted as stating that the song was not about a world with no religion at all but rather a world of one religion without competition as to whose God is the most powerful. An intriguing sentiment which was well received by the ever-liberal movement of the 1970s.

'Imagine' was released in the US in late 1971 and peaked at number 3 on the Billboard Hot 100 chart. Although the single wasn't officially released in the UK at that time, the LP on which it featured (of the same name) managed to top the UK album charts in the November of that year. It was later released as a single in the UK in 1975 to promote a compilation LP and peaked at a respectable number 6. Re-released for one last time following the Singers tragic death in 1980, 'Imagine' finally achieved the position it deserved and claimed number 1 in the UK Singles Charts.

The song itself has sold over 1.6 million copies in the UK alone, making it by far Lennon's biggest success as a solo artist. He is of course widely known as one part of the multimillion selling quartet, The Beatles. During their time together, The Beatles took the world by storm, shaping the music industry as we know it today an immeasurable amount. To date, The Beatles are the best-selling band of all time, with estimated sales of over 800 million records worldwide.

Following his huge success with The Beatles, Lennon went on to influence countless musicians and was highly regarded in the industry. His song 'Imagine' was actually inducted into the Rock and Roll Hall of Fame's *500 Songs that Shaped Rock and Roll* and earned him a Grammy Hall of Fame Award. Since its original release 'Imagine' has been covered by dozens of successful artists, including: Madonna, Stevie Wonder, Elton John, Joan Baez and Diana Ross. It is a fitting tribute to the incredible songwriter that was John Lennon, that so many music icons would want to cover this unquestionably remarkable song.



# Technical Exercises

---

In this section you will be required to play a selection of exercises drawn from each of the groups below. The examiner will be looking for the speed of your response and will also give credit for the level of your musicality. Please see the syllabus guide for details on the marking criteria.

All scales and arpeggios need to be played hands separately, in straight feel, ascending and descending, in the keys, octaves and tempos shown. Pentatonic scales are right hand only. You may use your book for Group A and Group B. Group C exercises must be played from memory.

Note that Groups A and B need to be played to a click and any fingerings shown are suggestions only.

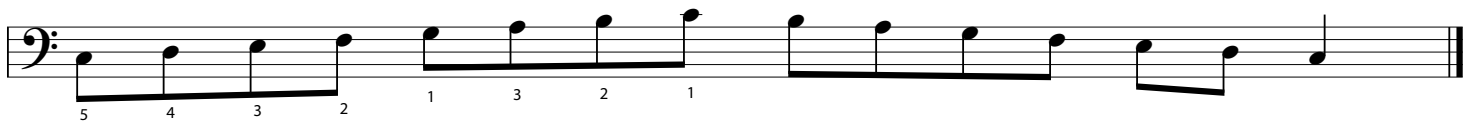
## Group A: Scales

The tempo for this group is ♩ = 52 bpm.

1. C major scale | right hand



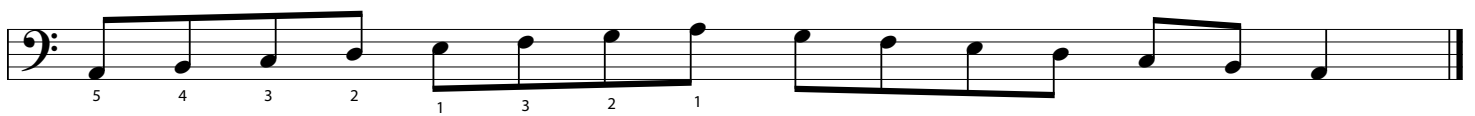
2. C major scale | left hand



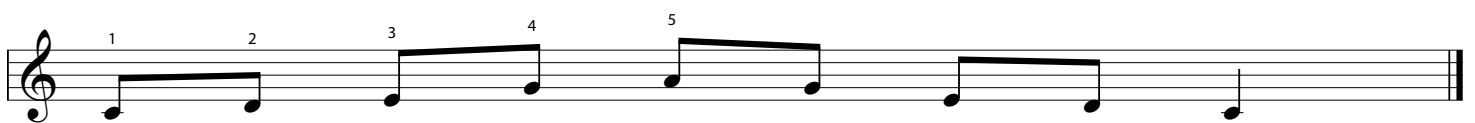
3. A natural minor scale | right hand



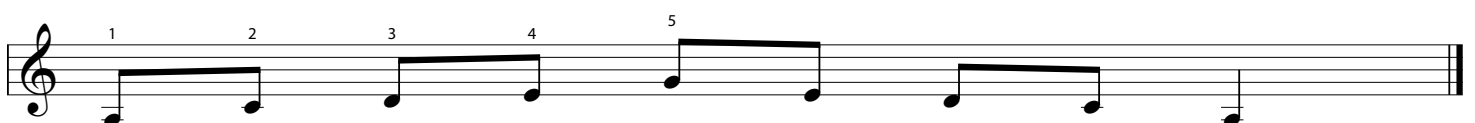
4. A natural minor scale | right hand



5. C major pentatonic scale | right hand



6. A minor pentatonic scale | right hand



# Ear Tests

---

In this section, there are two ear tests:

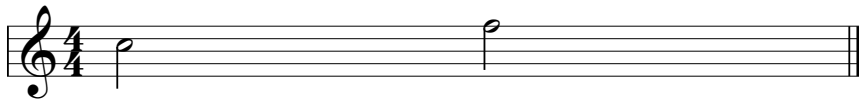
- Melodic Recall
- Chord Recognition

You will find one example of each type of test printed below and you will need to perform both of them in the exam.

## Test 1 | Melodic Recall

The examiner will play you two consecutive notes. You will need to identify whether the last note is higher or lower than the first. You will hear the test twice, each time with a one bar count-in. The tempo is ♩=95 bpm.

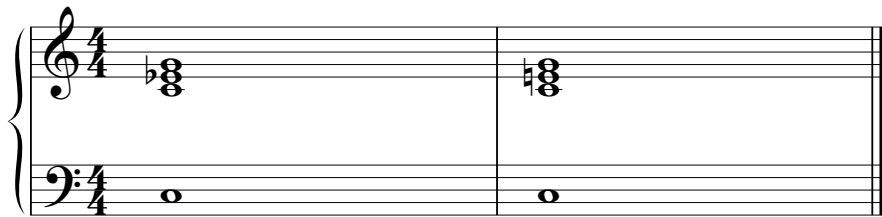
For this exercise, please use the word 'higher' or 'lower' in your answer.



*Please note: The test shown is an example. The examiner will give you a different version in the exam.*

## Test 2 | Chord Recognition

The examiner will play you a sequence of chords, each with a C root note. You will hear the chord sequence twice, each time with a one bar count-in. You will then be asked to identify which chord played was major and which chord was minor. The tempo is ♩=95 bpm.



*Please note: The test shown is an example. The examiner will give you a different version in the exam.*