

# Alive

# Pearl Jam

*Arranged by James Betteridge*

♩=74

**Uke. 1 (Assessed part)**

**A**

T	. 0	( )	0 0 0	0					
A	. 0	—	5 5-7	5	0	0	0	0	
B	. 1	1 — 4			1	1	1	1	
					2	2	2	2	7

BU BD  
5 7 (8) (7) 5

**Uke. 2 (Non-assessed part)**

[illegible]

*See note on welcome page about assessed and non-assessed ukulele parts*

[illegible][illegible]

[3]

The musical score for 'The Rose Tree' is presented in two systems. The first system shows the vocal melody in G major (one sharp) and 2/4 time. The melody consists of a series of eighth notes: G4, A4, B4, A4, G4, F#4, E4, D4, C4. The lyrics 'The Rose Tree' are written below the notes. The second system shows the piano accompaniment in G major and 2/4 time. The left hand plays a steady eighth-note bass line: G2, A2, B2, A2, G2, F#2, E2, D2, C2. The right hand plays a series of chords: G4, A4, B4, A4, G4, F#4, E4, D4, C4. The lyrics 'The Rose Tree' are written below the notes.

[5]

Words by Eddie Vedder Music by Stone Gossard  
© Copyright 1991 Write Treatage Music/Innocent Bystander Music/Universal Polygram International Publishing Inc.  
Universal/MCA Music Limited/Universal Music Publishing Limited.  
All Rights Reserved. International Copyright Secured.

SONG TITLE: LOCKED OUT OF HEAVEN

ALBUM: UNORTHODOX JUKEBOX

LABEL: ATLANTIC

GENRE: REGGAE ROCK

WRITTEN BY: BRUNO MARS,  
PHILIP LAWRENCE AND  
ARI LEVINE

PRODUCERS: THE SMEEZINGTONS,  
MARK RONSON,  
JEFF BHASKER AND  
EMILE HAYNIE

UK CHART PEAK: 2

## Uke. 1 (Assessed part)



Hawaiian singer Bruno Mars released 'Locked Out of Heaven' as his lead single from his second studio album, *Unorthodox Jukebox* in 2012. Following on from the success of Mars' debut record *Doo-Wops & Hooligans* (2010), Mars co-wrote the whole record and worked with several past collaborators, while enlisting new producers such as Mark Ronson (Amy Winehouse, Adele), Paul Epworth (Coldplay, CeeLo Green, U2, John Legend, Lianne La Havas, Paul McCartney) and Diplo (Gwen Stefani, M.I.A., Beyoncé, Justin Bieber, Usher, Snoop Dogg). The album straddles across a wide range of musical genres, such as reggae, rock, disco and soul, with 'Locked Out of Heaven' eventually charting inside the Top 10 in over twenty countries worldwide.

'Locked out of Heaven' was written by Mars, Philip Lawrence and Ari Levine (The Smeezingtons), and produced by Mark Ronson, Jeff Bhasker (Jay-Z, Kanye West), Emile Haynie (Eminem) and The Smeezingtons themselves. Predominantly a reggae rock song, it also shows influences from new wave and funk. The song, much like most of the material that features on this album, revolves around the theme of relationships, with a somewhat racier approach lyrically than his debut release.

While some critics noted influences from various bands, others agreed with Mars himself, who stated

that The Police were the main driving musical influence behind the song.

Bruno Mars is a Hawaiian singer-songwriter, multi-instrumentalist, record producer, and choreographer. Born and raised by his musical family in Honolulu, Hawaii, Mars began making music at a young age and performed in various musical venues in his hometown throughout his childhood. He graduated from high school and moved to Los Angeles to pursue his musical career.

# Technical Exercises

All exercises need to be played:

- In the keys, octaves and tempos shown.
- In either swung or straight feel, as directed by the examiner.

You can use your book in the exam for Groups A and B. Group C must be performed from memory.

Note that Groups A and B need to be played to a click and any fingerings shown are suggestions only.

## Group A: Scales

The tempo for this group is ♩=80 bpm.

### 1. A major scale

Musical notation for the A major scale (4/4 time). The treble clef staff shows the scale ascending and descending. The ukulele tablature below shows fingerings: T (5, 7, 4, 5, 7, 5, 4, 7), A (5, 4, 6, 4, 6, 4, 5), B (5, 4, 6, 4, 6, 4, 5).

### 2. A major scale

Musical notation for the A major scale (4/4 time). The treble clef staff shows the scale ascending and descending. The ukulele tablature below shows fingerings: T (0, 2, 4, 2, 0, 4, 2, 0), A (4, 2, 0, 2, 1, 2, 0, 2, 4, 0), B (2, 1, 2, 0, 2, 4, 0).

### 3. E<sup>b</sup> major scale

Musical notation for the E<sup>b</sup> major scale (4/4 time). The treble clef staff shows the scale ascending and descending. The ukulele tablature below shows fingerings: T (3, 5, 3, 4, 6, 3, 5, 6), A (3, 5, 3, 4, 6, 3, 5, 6), B (3, 5, 3, 4, 6, 3, 5, 6).

### 4. E<sup>b</sup> major scale

Musical notation for the E<sup>b</sup> major scale (4/4 time). The treble clef staff shows the scale ascending and descending. The ukulele tablature below shows fingerings: T (3, 1, 3, 4, 1, 3, 1, 4), A (3, 1, 3, 2, 0, 2, 3), B (3, 1, 3, 2, 0, 2, 3).

# Sight Reading

---

In this section you have a choice between either a sight reading test or an improvisation and interpretation test (see facing page).

The examiner will ask you which one you wish to choose before commencing. Once you have decided you cannot change your mind.

In the sight reading test, the examiner will give you a 4–8 bar melody in the key of E<sup>b</sup> major or A major. You will first be given 90 seconds to practise, after which the examiner will play the backing track twice. The first time is for you to practise and the second time is for you to perform the final version for the exam. For each playthrough, the backing track will begin with a one bar count-in. The tempo is ♩ = 60–95.

During the practice time, you will be given the choice of a metronome click throughout or a one bar count-in at the beginning.

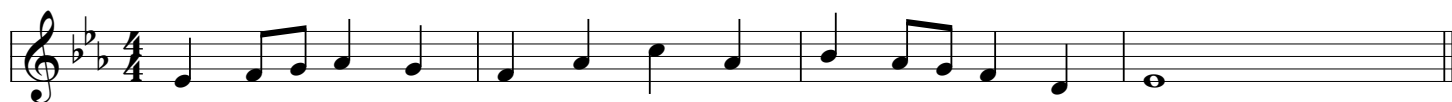
The backing track is continuous, so once the first playthrough has finished, the count-in of the second playing will start immediately.

Sight Reading | Example 1 | ♩ = 88



*Please note: The test shown is an example. The examiner will give you a different version in the exam.*

Sight Reading | Example 2 | ♩ = 88



*Please note: The test shown is an example. The examiner will give you a different version in the exam.*