

Poker Face

Lady Gaga

Words & Music by Stefani Germanotta & Nadir Khayat

Dance Pop

N.C.

Piano introduction in G major, 4/4 time. The piece starts with a forte (*f*) dynamic. The right hand plays a series of whole notes (G4, A4, B4, C5) while the left hand plays a rhythmic pattern of eighth notes (G2, A2, B2, C3).

First system of piano accompaniment. It features a repeating eighth-note pattern in the right hand and a bass line in the left hand. Chord diagrams above the staff indicate the following chords: G#m, E/G#, F#, G#m, E/G#, and F#.

Second system of piano accompaniment, continuing the repeating eighth-note pattern and bass line from the first system. Chord diagrams above the staff indicate the following chords: G#m, E/G#, F#, G#m, E/G#, and F#.

Vocal entry and piano accompaniment. The vocal line begins with a repeat sign and a fermata over the first measure. The lyrics are: "I wan - na hold 'em like they do in Tex - as plays: I wan - na roll with him, a hard pair we will be." The piano accompaniment continues with the eighth-note pattern and bass line.

Rehab

Amy Winehouse

Words & Music by Amy Winehouse

Blues ♩ = 150



They tried to make me go to re - hab, I said, no, no, no.

*RH 1° tacet until **

Yes I've been black but when I come back, no,

1° & 2° only

G⁷



no, no, no. I ain't got the time,

Technical Exercises

Group A: Scales

The natural minor scale must be prepared as shown below. You may select any starting note from A–E. You will be asked if you would like to sing along to a metronome click or hear four clicks before you start. Whichever option you choose, you will hear your chosen starting note before the count starts. You may perform this test using any vocal sound except humming or whistling. The tempo is ♩=80.



Group B: Arpeggios

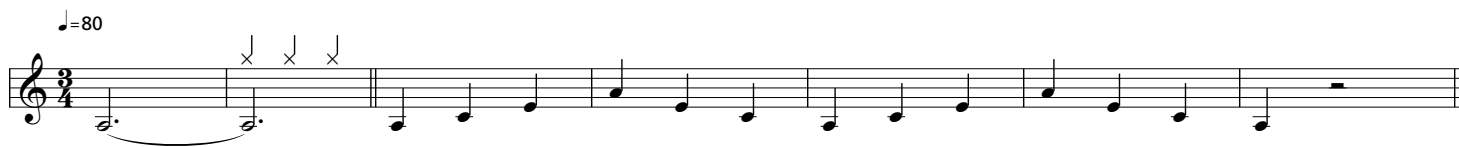
In this group, both of the arpeggio exercises need to be prepared as shown below. You will be asked to perform one of them in the exam, as chosen by the examiner.

This test is performed to a metronome click track and you may select any starting note from A–E. You will hear the root note played on piano followed by a one-bar (three or four clicks) count-in. You may perform this test using any vocal sound except humming or whistling. The tempo is ♩=80.

A minor arpeggio | Pattern 1



A minor arpeggio | Pattern 2



Improvisation & Interpretation

The examiner will give you a chord sequence in the key of A minor. You must improvise a melody over the backing track. You will hear the backing track three times. The first and second time is for you to rehearse and the third time is for you to perform the final version for the exam. Each playthrough will begin with the root note and a four-beat count-in. The backing track is continuous throughout, so once the first playthrough has finished, the root note and count-in of the second and third playthroughs will start immediately. The tempo is ♩=80–90.

You may perform this test using any vocal sound except humming or whistling.

♩=90 Rock

A musical staff in 4/4 time, key of A minor. It begins with a treble clef and a key signature of one flat. The first measure contains a whole note chord (A minor) with a slur over it. The next four measures are marked with 'x' symbols above them, indicating a count-in. The final four measures are marked with 'Am', 'Dm', 'Em', and 'Am' above them, with diagonal lines in the staff representing the chords.

Please note: the test shown is an example. The examiner will give you a different version in the exam.