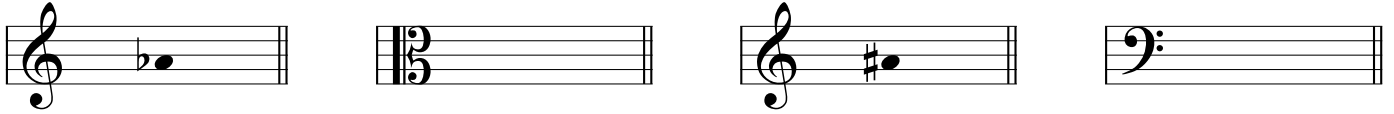


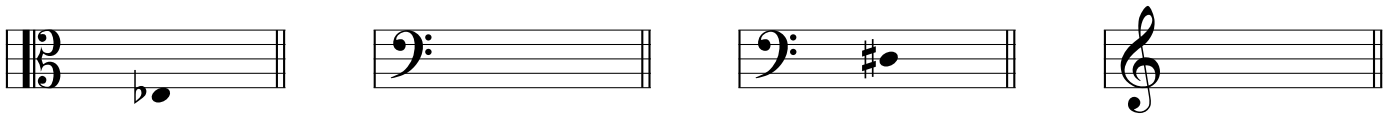
Section 1 | Music Notation

Clefs | Rewriting into other clefs

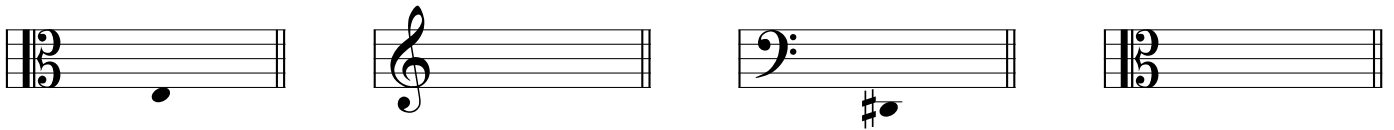
1. Write each of the given notes into the empty staves on the right, using the new clef and maintaining the same pitch. In some cases, this will require the use of several ledger lines:



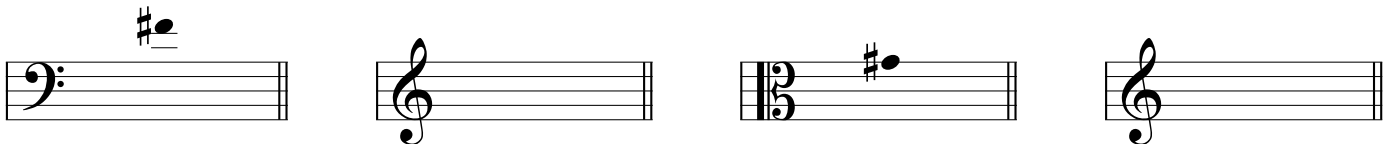
2. Write each of the given notes into the empty staves on the right, using the new clef and maintaining the same pitch. In some cases, this will require the use of several ledger lines:



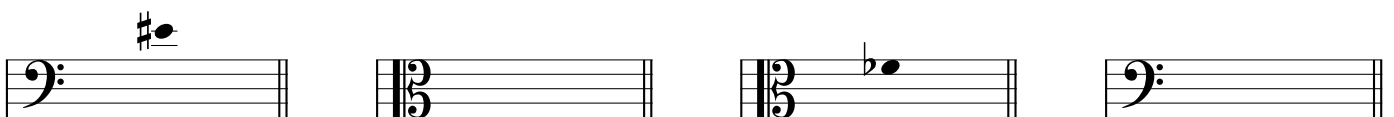
3. Write each of the given notes into the empty staves on the right, using the new clef and maintaining the same pitch. In some cases, this will require the use of several ledger lines:



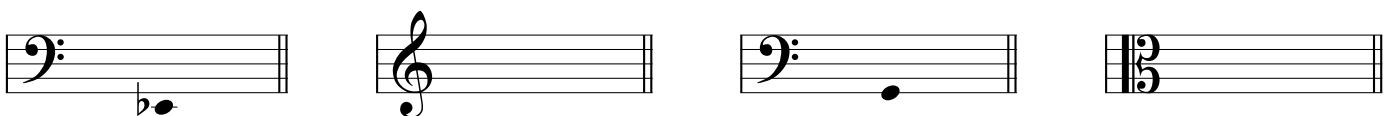
4. Write each of the given notes into the empty staves on the right, using the new clef and maintaining the same pitch. In some cases, this will require the use of several ledger lines:



5. Write each of the given notes into the empty staves on the right, using the new clef and maintaining the same pitch. In some cases, this will require the use of several ledger lines:

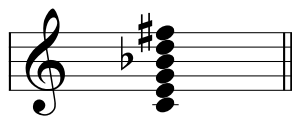


6. Write each of the given notes into the empty staves on the right, using the new clef and maintaining the same pitch. In some cases, this will require the use of several ledger lines:

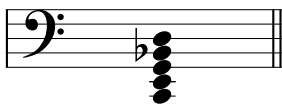


Chords | Extended and altered chords

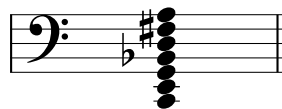
1. Name the following C chords, writing your answer on the dotted line below each staff:



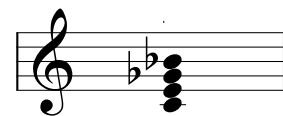
.....



.....

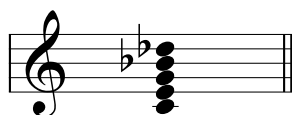


.....

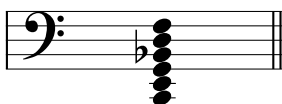


.....

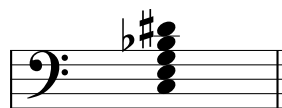
2. Name the following C chords, writing your answer on the dotted line below each staff:



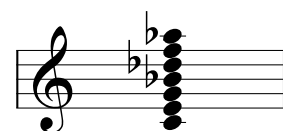
.....



.....

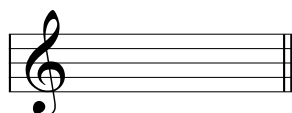


.....

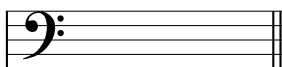


.....

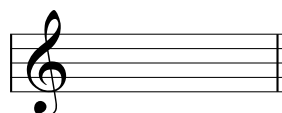
3. Write out the notes of each of the following chords onto the staff above:



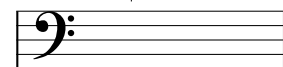
B⁷#¹¹



A^b7^b9

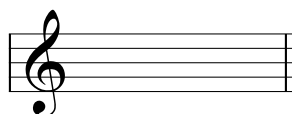


E^m¹³

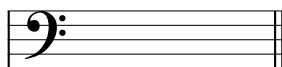


F¹³#¹¹

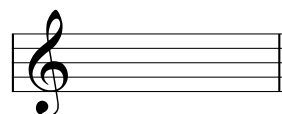
4. Write out the notes of each of the following chords onto the staff above:



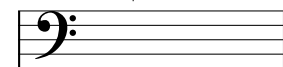
G⁷^b5



E⁷#⁹

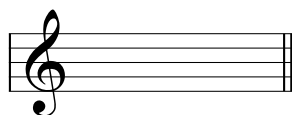


D⁷#¹¹



B^b7[#]5^b9

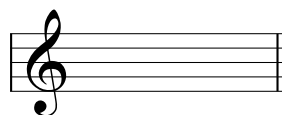
5. Write out the notes of each of the following chords onto the staff above:



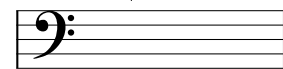
D^b7[#]5



G[#]7[#]5[#]9

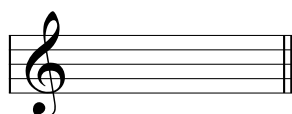


B⁷5

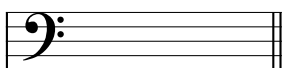


A^b7^b5

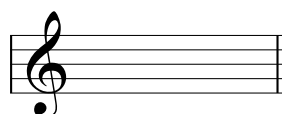
6. Write out the notes of each of the following chords onto the staff above:



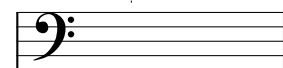
B^bm⁷^b5



E⁷_{sus}⁴



A⁷^b9

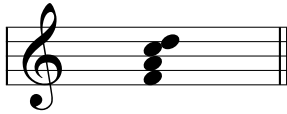


F⁷^b5

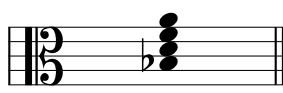
Section 2 | Popular Music Harmony

Chords | Identifying chords

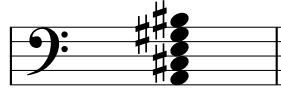
1. Name the following chords, writing your answer on the dotted line below each staff. All chords are in root position:



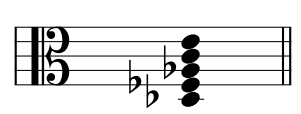
.....



.....



.....

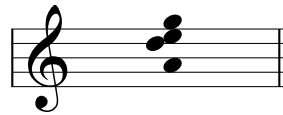


.....

2. Name the following chords, writing your answer on the dotted line below each staff. All chords are in root position:



.....



.....

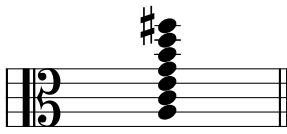


.....

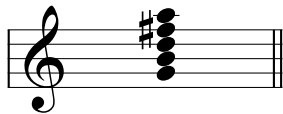


.....

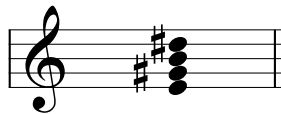
3. Name the following chords, writing your answer on the dotted line below each staff. All chords are in root position:



.....



.....

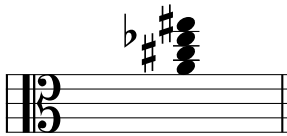


.....



.....

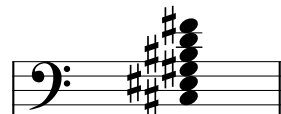
4. Name the following chords, writing your answer on the dotted line below each staff. All chords are in root position:



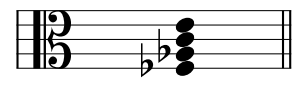
.....



.....



.....



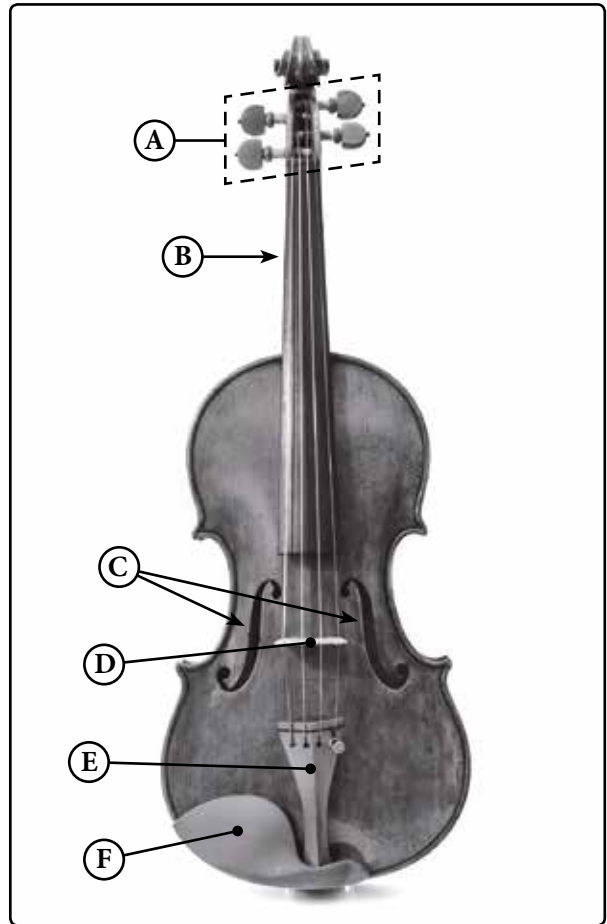
.....

Part 1 | Identification | Strings

The following question refers to the labelled image to the right:

1. Identify the following parts of the violin:

- A)
- B)
- C)
- D)
- E)
- F)



2. Explain how the F-holes contribute to creating a violin's sound:

.....
.....

3. Explain how a tuning peg can alter the pitch of a string:

.....
.....

4. Explain why a cello has a spike:

.....
.....