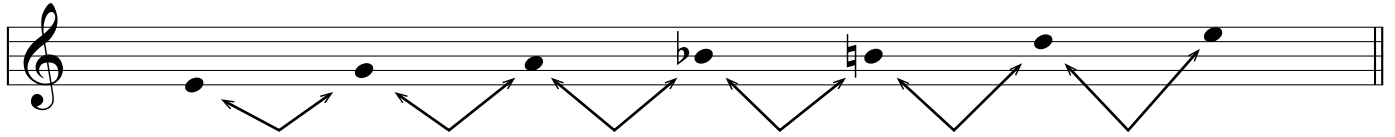




## Scales | Pentatonic scales and variants

1. Add the names of the intervals between each pair of notes below the staff where the arrows meet. Below this, write the name of the scale:



Intervals: .....

Name of scale: .....

2. Name the scales used by the following riffs. Write your answer below each example:



.....



.....

3. Name the scales used by the following riffs. Write your answer below each example:



.....



.....

4. Name the scales used by the following riffs. Write your answer below each example:



.....



.....

# Section 3 | Band Knowledge

## Part 1 | Identification | Drums

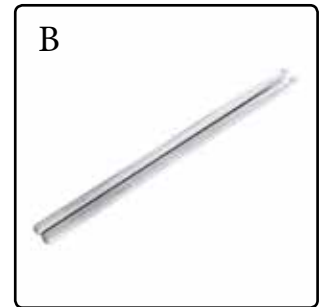
The following two questions refer to the labelled images on the right:

1. What does image 'A' show?

Your answer: .....

2. What does image 'B' show?

Your answer: .....



True or false:

- 3. Drum sticks are normally used in pairs:  True  False
- 4. Brushes are often used for blues and jazz music:  True  False
- 5. Drum sticks often have a retractable head:  True  False

The following four questions refer to the four labelled images of parts of a drum kit on the right:

6. Which parts of the kit use pedals? (Tick one or more boxes)

- A  B  C  D

7. Which image shows part of a snare drum? (Tick one box)

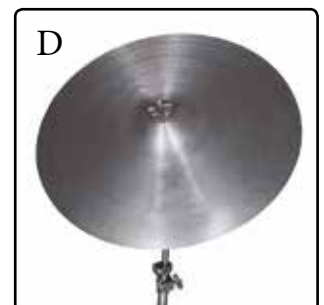
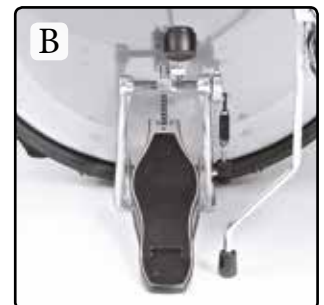
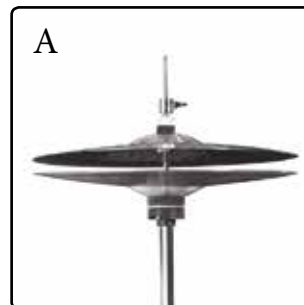
- A  B  C  D

8. Which image shows part of a hi-hat? (Tick one box)

- A  B  C  D

9. Which image shows a floor-mounted drum? (Tick one box)

- A  B  C  D



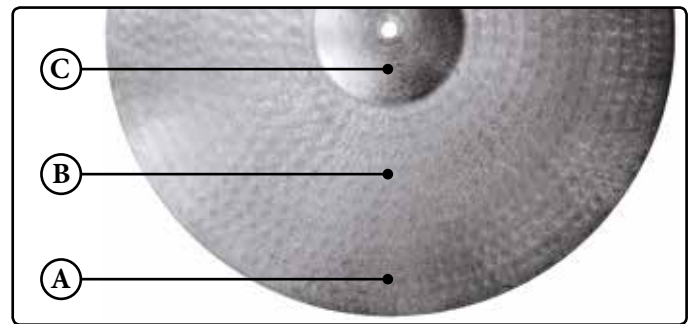
## Section 3 | Band Knowledge

### Part 2 | Notation & Techniques | Drums

The following question refers to the labelled image on the right:

1. Which part of the cymbal would you strike if asked to play the ride bell? (Tick one box)

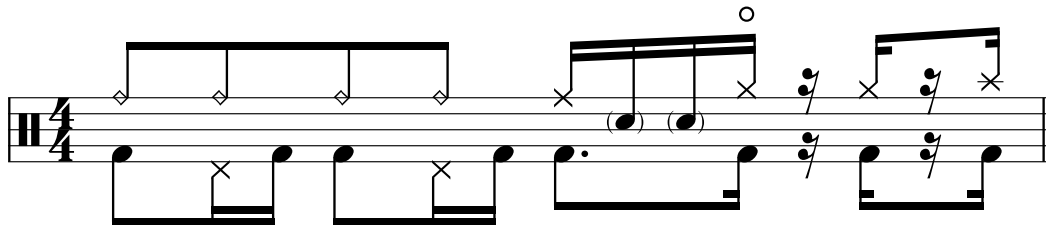
A    B    C



True or false:

2. The drum-stick tip produces a lighter sound than the neck:  True    False
3. The ride cymbal is usually mounted to the right of the drum kit:  True    False
4. 'Ghost notes' is a term drummers often use to describe rests:  True    False
5. In drumming, ghost notes are most often heard on the snare drum:  True    False
6. A 'drum head' is a metal hoop around the top of the drum:  True    False

The following four questions refer to the one-bar extract of drum notation on the below:



7. On beats 1 and 2, the hi-hat foot is closed:  
 True    False
8. The first four eighth notes of the bar are played on the ride bell:  
 True    False
9. The circle over the last 16th note of beat 3 means that the hi-hat should be closed:  
 True    False
10. The middle two 16th notes on beat 3 have brackets around the noteheads. This means that they are ghost notes:  
 True    False