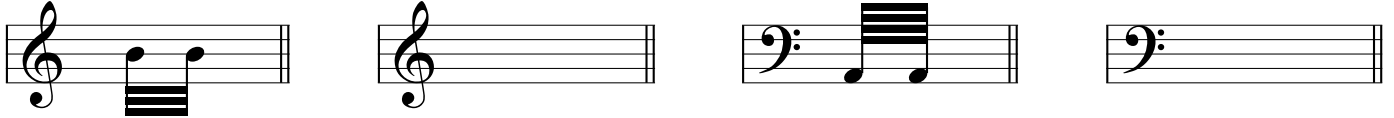


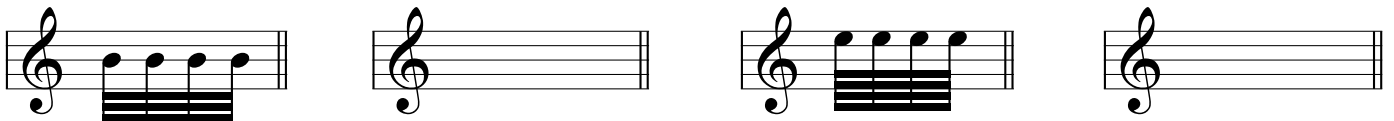
Section 1 | Music Notation

Rhythm | 32nd and 64th notes

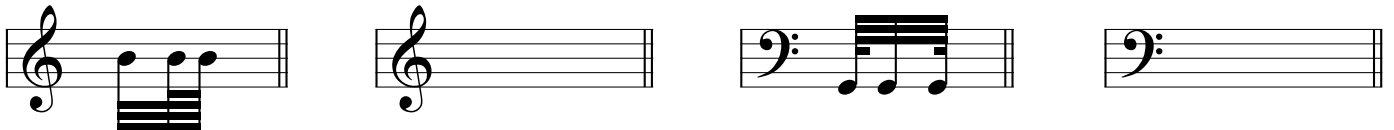
1. Add together the value of the notes in the staves on the left, then add a single note of the same combined value in the empty staves to their right:



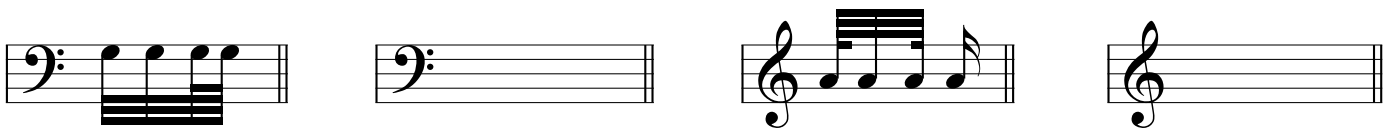
2. Add together the value of the notes in the staves on the left, then add a single note of the same combined value in the empty staves to their right:



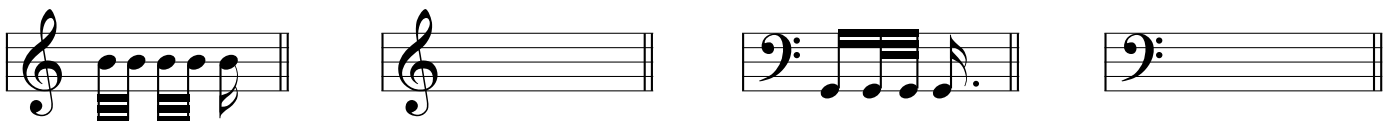
3. Add together the value of the notes in the staves on the left, then add a single note of the same combined value in the empty staves to their right:



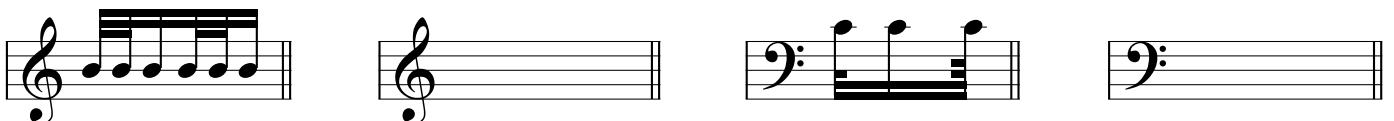
4. Add together the value of the notes in the staves on the left, then add a single note of the same combined value in the empty staves to their right:



5. Add together the value of the notes in the staves on the left, then add a single note of the same combined value in the empty staves to their right:



6. Add together the value of the notes in the staves on the left, then add a single note of the same combined value in the empty staves to their right:

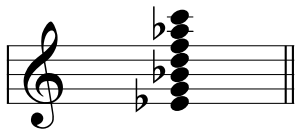


Section 2 | Popular Music Harmony

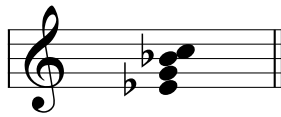
Chords | Chord identification

1. Copy the chord names below to the appropriate chords:

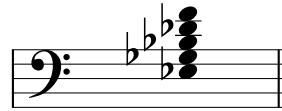
E^b6 E^b11 E^bm9 E^bmaj13 E^bmaj11 E^bmaj9 E^bm13 E^bm7



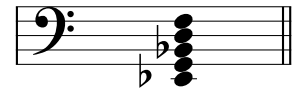
.....



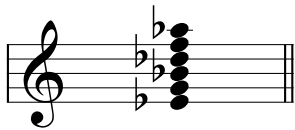
.....



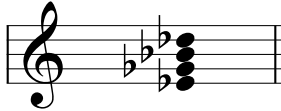
.....



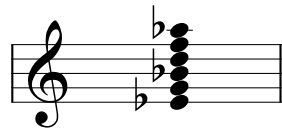
.....



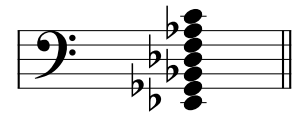
.....



.....



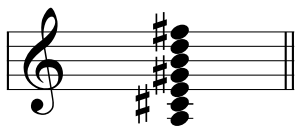
.....



.....

2. Copy the chord names below to the appropriate chords:

$Amaj7^b5$ $Am7$ A^6 A^7sus4 $Amaj11$ $Am13$ $Amaj13$ $A13$



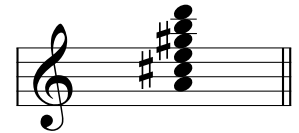
.....



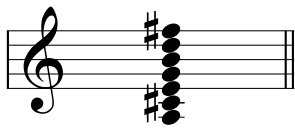
.....



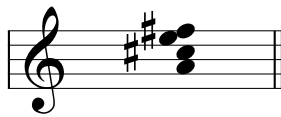
.....



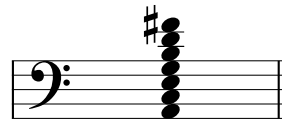
.....



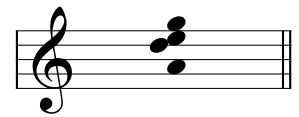
.....



.....

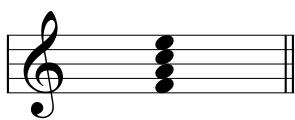


.....

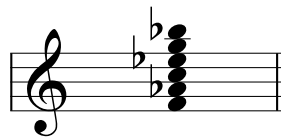


.....

3. Identify the following chords by writing their names onto the dotted line below each chord:



.....



.....



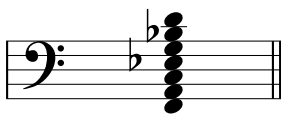
.....



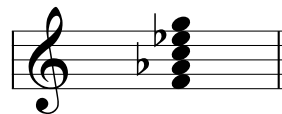
.....



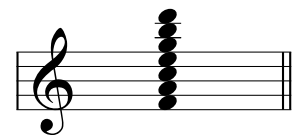
.....



.....



.....

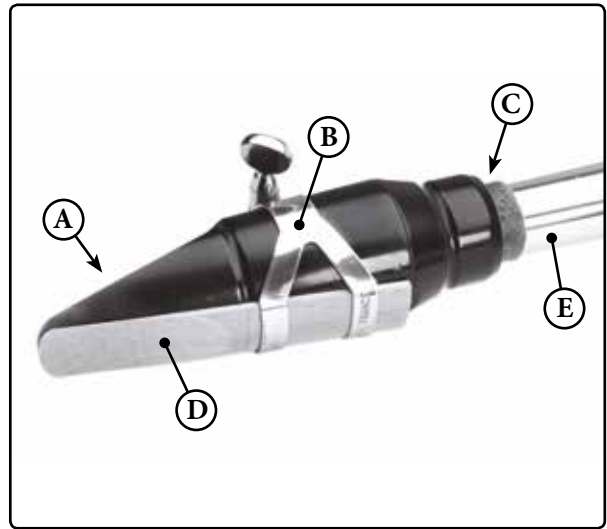


.....

Section 3 | Band Knowledge

Part 1 | Notation & Techniques | Saxophone

The following task refers to the labelled image to the right:



1. Identify the different parts of the saxophone:

- A)
- B)
- C)
- D)
- E)

2. Where would you find an octave key on a saxophone, and what happens when it is pressed?

.....

3. What do the keys cover and uncover when the saxophone is played?

.....

True or false:

- 4. The reed is made of cane: True False
- 5. There are 40 to 50 tone holes in a saxophone: True False
- 6. The neck is the bent top section of the saxophone's tubing: True False

7. Explain how pressing a key alters the pitch of the saxophone:

.....

The following two questions relate to the labelled vocal ranges below:

(A)
(B)
(C)

Q 3.19 | Each bar shows the three areas within a standard vocal range. Which letter most closely resembles the head voice area?

	1
--	---

Your answer:

Q 3.20 | Which vocal range does this most closely resemble? (Tick one box)

	1
--	---

- Soprano
 Alto
 Tenor
 Bass

Q 3.21 | How much lower than the written pitch does a tenor saxophone sound?

	1
--	---

Your answer:

Q 3.22 | Which is the correct pitch range for a baritone saxophone?

	1
--	---

(A)
(B)
(C)
(D)

Your answer:

Q 3.23 | What is the most common type of trombone?

	1
--	---

Your answer: